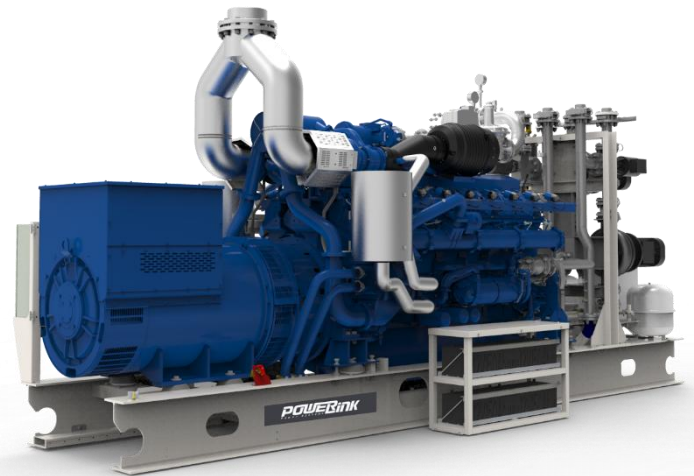


### Standard Basic Module - Open Type

- Highly efficient gas engine and AC synchronous alternator
- Gas safety train
- Exhaust and jacket water heat exchanger
- Heating water and jacket water circulation system
- Advanced engine control system, including: ignition system, detonation control system ,speed control system , air/fuel ratio control system
- Strict shop test for all CHP unit
- Industrial silencer with silencing ability of 12-20dB(A)
- Unattached switch cabinet and electric control cabinet
- Multi-functional control system with simple operation
- Data communication interfaces integrated into control system
- Monitoring battery voltage and charging automatically
- Auto refilling oil system
- Bus interface for connecting to higher level control unit



#### Structure and control cabinet

Structure type	Open type
Canopy painting	High-class powder coating
Electrical control cabinet	Integrated,IP54
Noise level@1m, dB(A)	89
@7m, dB(A)	85
@10m, dB(A)	82

#### Dimension and weight

Dimension ( LxWxH ) , mm	2800x1050x1550
Weight, kg	1900

#### Special statement :

- 1、 The technical data are based on natural gas with a lower calorific value of 36MJ/Nm<sup>3</sup>.The technical data indicated is based on standard conditions according to ISO8528/1, ISO3046/1 and BS5514/1.
- 2、 The technical data is measured in standard conditions:  
Absolute atmospheric pressure: 100kPa  
Ambient temperature : 25°C  
Relative air humidity : 30%
- 3、 Rating adaptation at ambient conditions acc to DIN ISO 3046/1. The tolerance for the specific fuel consumption is + 5 % at rated output.
- 4、 Technical data above are just for standard product ,and may be subject to change. As this document is used only for presale reference, take the specification supplied by PowerLink before ordering as final.

#### Power and efficiency @50Hz

Electric power -kW	66	Electric efficiency	38.4%
Heat power-kW	91	Heat efficiency	53.1%
Fuel input-kW	172	Total efficiency	91.5%

#### Fuel and emission

Fuel type	Natural gas
Methane number	MN > 80
Excess air factor ( Lambda )	1.62
Fuel consumption @100% load, m <sup>3</sup> /h	17
Supply gas pressure range, kPa	10~20
<b>Emission without catalytic converter</b>	
NOx , mg/Nm <sup>3</sup>	<6500mg/Nm <sup>3</sup>
CO , mg/Nm <sup>3</sup>	<6500mg/Nm <sup>3</sup>
HCHO ( formaldehyde ) , mg/Nm <sup>3</sup>	<60mg/Nm <sup>3</sup>
NMHC , mg/Nm <sup>3</sup>	<150mg/Nm <sup>3</sup>
<b>Emission with catalytic converter (optional)</b>	
NOx , mg/Nm <sup>3</sup>	≤ 250

## Standard Basic Module + Acoustic Attenuated Canopy (Optional)



### Dimension and Noise Level

Canopy Size	3000*1050*1550mm
Noise Level@ 1m , dB(A)	76
@ 7m , dB(A)	64
@ 10m , dB(A)	62

- Modular designed and manufactured for plug and play
- Environmental friendly low emission
- Small indoor space required for installation
- Low noise does not affect the surrounding environment



## Standard Basic Module + Acoustic Attenuated Container (Optional)



### Dimension and Noise Level

Optional container (mm) (customized container modeling service available)	<input type="checkbox"/>	7000*2300*2500
	<input type="checkbox"/>	6058*2438*2591
	<input type="checkbox"/>	12192*2438*2896
	<input type="checkbox"/>	12192*3000*2896
	<input type="checkbox"/>	13500*3000*2896
Noise Level@ 1m , dB(A)		74
@ 7m , dB(A)		62
@ 10m , dB(A)		60

- Outdoor application enabled, weatherproof and dustproof, corrosion preventive
- Environmental friendly low emission
- Modular designed and manufactured for plug and play
- Low noise does not affect the surrounding environment



## CHP Unit performance data and manufacturing technology

CHP unit model	CG66-NG	Power and efficiency			
Electric output power ( kW )	66	Load	100%	75%	50%
Heat output power ( kW )	91	Electric power (kW)	66	50	33
CHP unit electric efficiency	38.4%	Heat power (kW)	91	68	46
CHP unit heat efficiency	53.1%	Energy input (kW)	172	129	89
CHP unit total efficiency	91.5%	Electric efficiency	38.4%	38.8%	37.2%
Hot water production @inlet 70°C/outlet 90°C[t/h]	3.786	Heat efficiency	53.1%	52.7%	51.7%
Overload runtime at 1.1xSe(hour)	1	Total efficiency	91.5%	91.5%	88.9%
Steady-state voltage deviation	≤±1%	<p><b>Manufacturing technolog</b></p> <ul style="list-style-type: none"> <li>● Special welded base frame, inner vibration isolators and design for whole lifting</li> <li>● With high-class paint, endurable brightness as well resistance against abrasion and defacing</li> <li>● Installation manual, operation and maintenance manual wiring program</li> </ul> <p><b>Standards and certificate</b></p> <ul style="list-style-type: none"> <li>● ISO3046 , ISO8528 , GB2820</li> <li>● BS5000PT99 , AS1359 , IEC34</li> <li>● ISO9001:2008 quality system certification</li> </ul>			
Transient-state voltage deviation	-15%~20%				
Voltage recovery time(s)	≤4				
Voltage unbalance	1%				
Steady-state frequency regulation	±0.5%				
Transient -state frequency regulation	±5%				
Frequency recovery time(s)	≤3				
Steady-state frequency band	0.5%				
Recovery time response(s)	0.5				
Telephone interference factor(TIF)	≤50				
Telephone harmonious factor(THF)	≤2%, as per BS4999				

## AC alternator performance data

Alternator brand	Leroy-Somer	Voltage	Power
Alternator model	LSA44.3S4	380V	72 kW
Rated output power (kW)	72	400V	72 kW
Power factor	0.8	415V	72 kW
Rated current @ 400V and 100% load (A)	130	440V	72 kW
Excitation system	Brushless		
THF (BS EN60034- 1)	<2%		
Bearing number	1		
Winding material	100% copper		
Wiring connection	Star		
Rotor insulation class	H		
Winding pitch	2/3		
A.V.R. model	R438		
Voltage fluctuation(no load to full load)	± 0.5%		
Housing protection	IP23		
TIF (NEMA MG 1-22)	<50		
Excitation method	AREP		
Rated ambient temperature(°C)	40		
Rated stator temperature rise(°C)	125		

## Efficient gas engine

### General data

NO. of cylinders		4
Engine type		4-stroke,natural aspirated, stoichiometric
Cylinder arrangement		In line
Bore x stroke	mm	108x125
Displacement	L	5.5
Compression ratio		13 : 1
Rated speed	rpm	1500
Rated output power	kW	72
Excess air factor		1.62
Rotation direction		Anti-clockwise viewed on flywheel
Ignition timing	°BTDC	18

### Cooling system

Coolant refilling capacity	L	13
Max. jacket water operating pressure	kPa	230
Min. jacket water circulation flow	L/min	170
Min. jacket water temperature	°C	80
Max. jacket water temperature	°C	88
Max. jacket water difference(inlet-outlet)	K	6
Coolant type		Mixture of 40 % antifreeze and 60 % clean fresh water. Lower ambient temperature, higher content of antifreeze.

### Induction/exhaust system

Exhaust flow(wet)	kg/h	342
Combustion air flow	kg/h	331
Exhaust temperature	°C	430
Max. exhaust back pressure	mbar	40
Max. suction restriction	mbar	15

### Fuel control system

Gas train, Including:	ball valves
	filters
	gas pressure gauge
	safety solenoid valves
	constant pressure regulator etc
	gas pressure relief valve

### Lubrication system

Max. refilling capacity	L	21
Min. refilling capacity	L	15
Max. consumption	kg/h	0.085
Lubrication oil pump		Gear driven

### Energy balance and gas flow

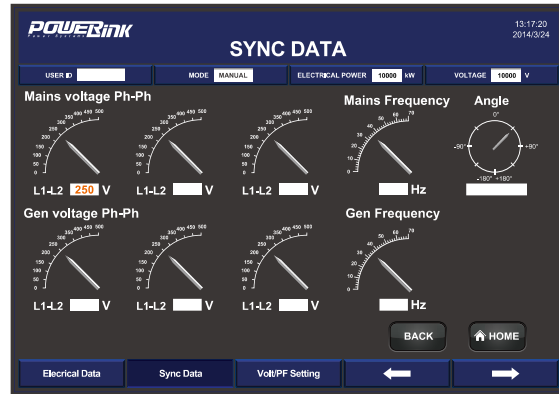
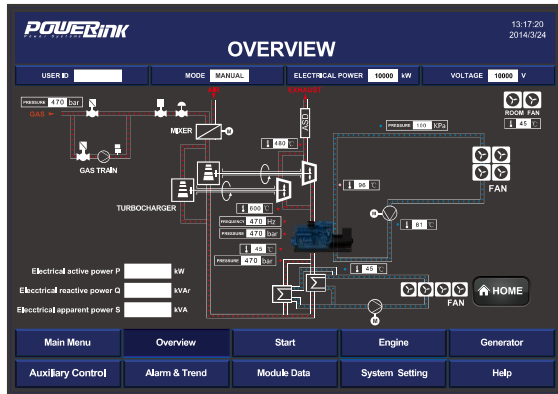
Load	100%	75%	50%
Mechanical power, kW	72	54	36
Coolant heat, kW	50	48	37
Exhaust heat up to 120°C, kW	38	29	20
Max. radiation heat, kW	7	/	/
Energy input, kW	172	129	89
Combustion air flow, kg/h	331	252	169
Fuel consumption, m <sup>3</sup> /h	17	13	9
Exhaust gas flow, kg/h	342	260	174

### Ignition system

Ignition type	Electronic ignition system
Polarity	Negative earth
Spark plug	Separate for every cylinder

## PCC-300 control system

Open control system is adopted with touch screen display , and various functions, including: engine protection and control, paralleling between gensets or gensets and mains, and CHP control functions, as well as communication functions, etc.



### Main functions

- Engine monitor : coolant, lubrication, exhaust, battery
- Supply gas circuit monitor: pressure, temperature and CH4 content
- Auto paralleling and load share
- Voltage and PF control
- Alternator data : U, I, Hz, kW, kVA, kVAr, PF, kWh, kVAh
- Mains data: U, I, Hz, kW, kVAr, PF
- Modbus communication protocol based on RS232 and RS485 interfaces
- SMS message
- Internet connection and USB 2.0 interface
- 10-inch touch screen
- Internet monitor, auto orientation and cloud communication
- 1000 history events log

### Advantages

- Accordant with consumer requirement
- Complete control project
- Convenient remote monitor and service
- Simplified engine start/stop control
- Enhanced stability and safety

### Standard protection functions

- Alternator protection**
- 2xReverse power
  - 2xOverload
  - 4xOvercurrent
  - 1xOvervoltage
  - 1xUndervoltage
  - 1xOver/under frequency
  - 1xUnbalanced current
- Busbar/mains protection**
- 1xOvervoltage
  - 1xUndervoltage
  - 1xOver/under frequency
  - 1xPhase sequence
  - 1xROCOF alarm

### Standard control functions

- Power control**
- RPM control(synchronization)
  - Power control(grid connection)
  - Load share(island )
- Lubrication control**
- Auto refilling
  - Warning and monitoring
- Fan control**
- Ventilation for engine room
  - Radiator fan
  - Emergency radiator fan
- Engine protection**
- Various routine and customized protection functions
  - Monitoring
- Voltage control**
- Voltage tracking (synchronization)
  - Voltage control(island)
  - PF control(grid connection)
  - Reactive power share (island )
- Pump control**
- Cooling system
  - Emergency radiator
- Valve control**
- Cooling system
  - Heating system
  - Emergency radiator

## Standard configuration

Engine	Alternator	Canopy and base	Electrical cabinet
Gas engine Ignition system Lambda controller Electronic governor actuator Electrical start motor Battery system Auto charging system Detonation control system	AREP AC alternator H class insulation IP23 protection AVR voltage regulator PF control	Steel monocoque base frame Engine bracket Vibration isolators Alternator base	Air circuit breaker Paralleling control system 10-inch touch screen Communication interfaces Electrical switch cabinet Lighting system Smoke alarm system
Gas supply system	Lubrication system	Standard voltage	Induction/ exhaust system
Gas safety train Air/fuel mixer	Oil filter Daily auxiliary oil tank Auto refilling oil system New and used oil tank (Only applicable to container , two inch with the daily oil tank )	380/220V 400/230V 415/240V 440/254V	Air filter Exhaust silencer Exhaust bellows Gas flowmeter Gas leakage protection(Only applicable to canopy and container)
Heat exchange system	Service and documents		
Exhaust heat exchanger Jacket water circulation pump Jacket water heat exchanger Expansion tank, Shut-off valve Three-way auto proportional valve Intercooler radiator	Tools package Installation and operation manual Maintenance manual Software manual Parts manual	Engine operation and maintenance manual Gas quality specification Control system manual After service guide Standard package	

## Optional configuration

Engine	Alternator	Service and documents	Lubrication system	Exhaust system
Heavy duty air filter Backfire safety control valve Jacket water heater	Space heater Treatments against humidity and corrosion	Service tools Maintenance and service parts	Oil consumption gauge	Guard shield from touch Residential silencer Three-way catalytic converter
Canopy and base	Gas supply system	Heat exchange system	Electrical system	Voltage
SECC base frame	Gas flow gauge			220V 230V 240V